



River Chess  
Smarter Water  
Catchment

# Chess Smarter Water Catchment - Local Access Forum

Steph Horn – Project Coordinator – Chilterns Conservation Board

06.03.24



CHILTERN  
CHALK STREAMS  
PROJECT



CHILTERN  
CONSERVATION BOARD



Environment  
Agency

AffinityWater



Herts &  
Middlesex  
Wildlife Trust



Queen Mary  
University of London

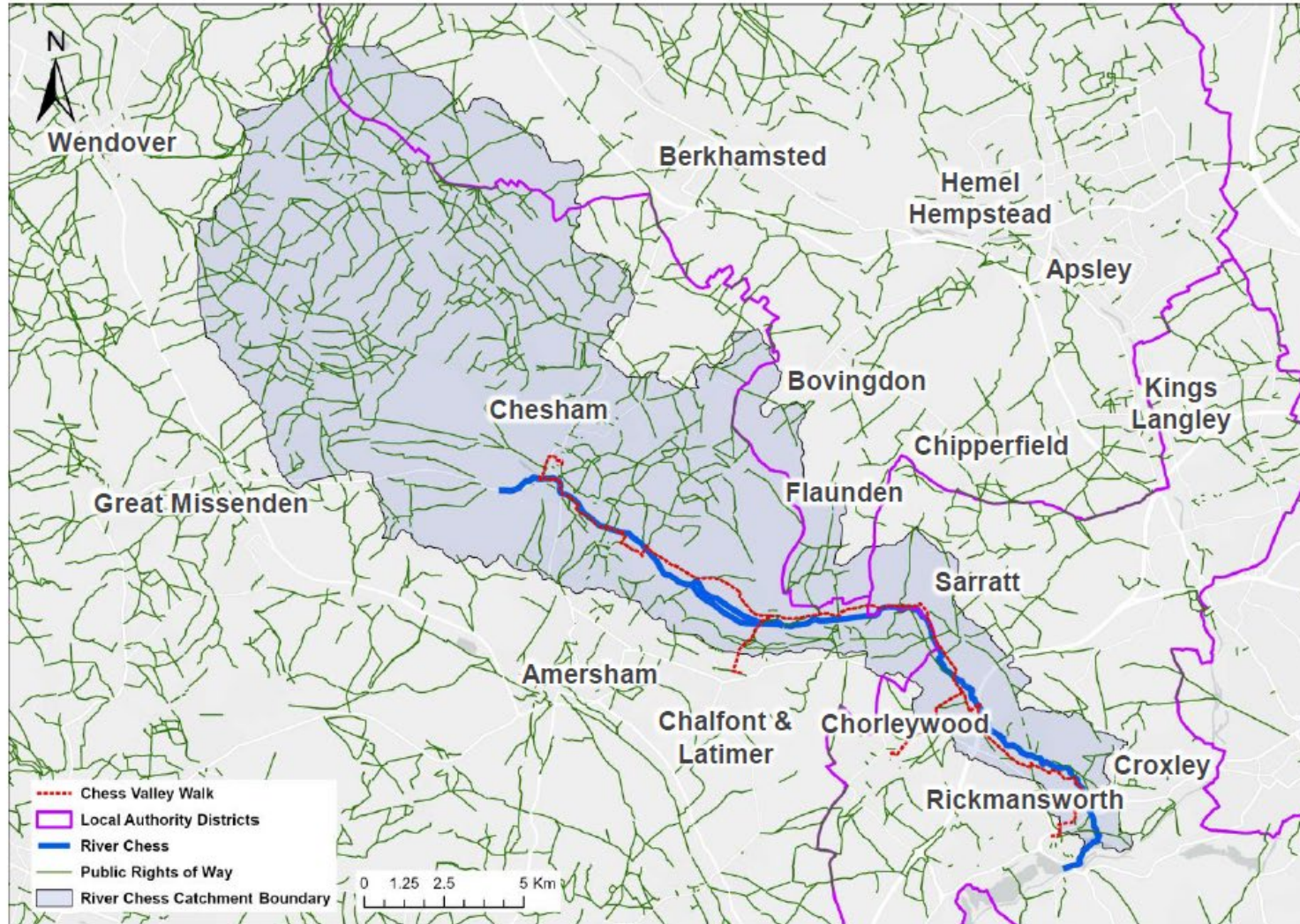
sustrans

Working in partnership



# Setting the Scene 2022-23

## Data Review



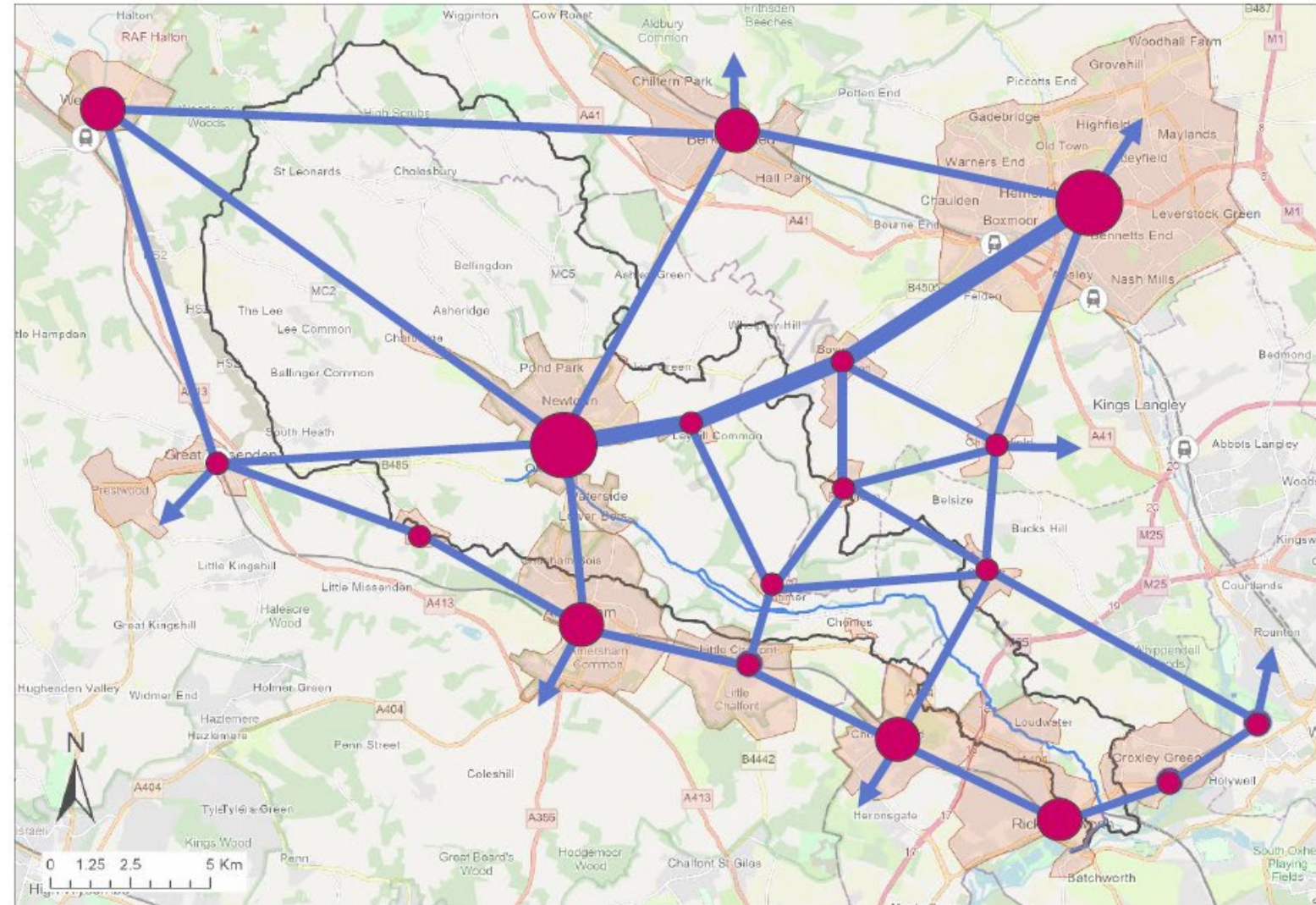
## Paths and trails

The Chess Valley Walk  
and Public Rights of  
Way

# The Approach

## Developing the Draft Network

- Analysing trip origins, destinations and generators (existing and planned)
- Clarifying existing connections and focus areas
- Considering points of severance such as major roads and railways
- Convert flows into a network of routes and determine the type of improvements required

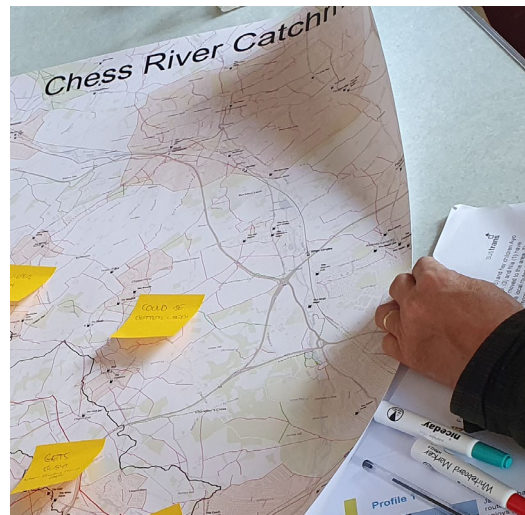


# Stakeholder Workshop

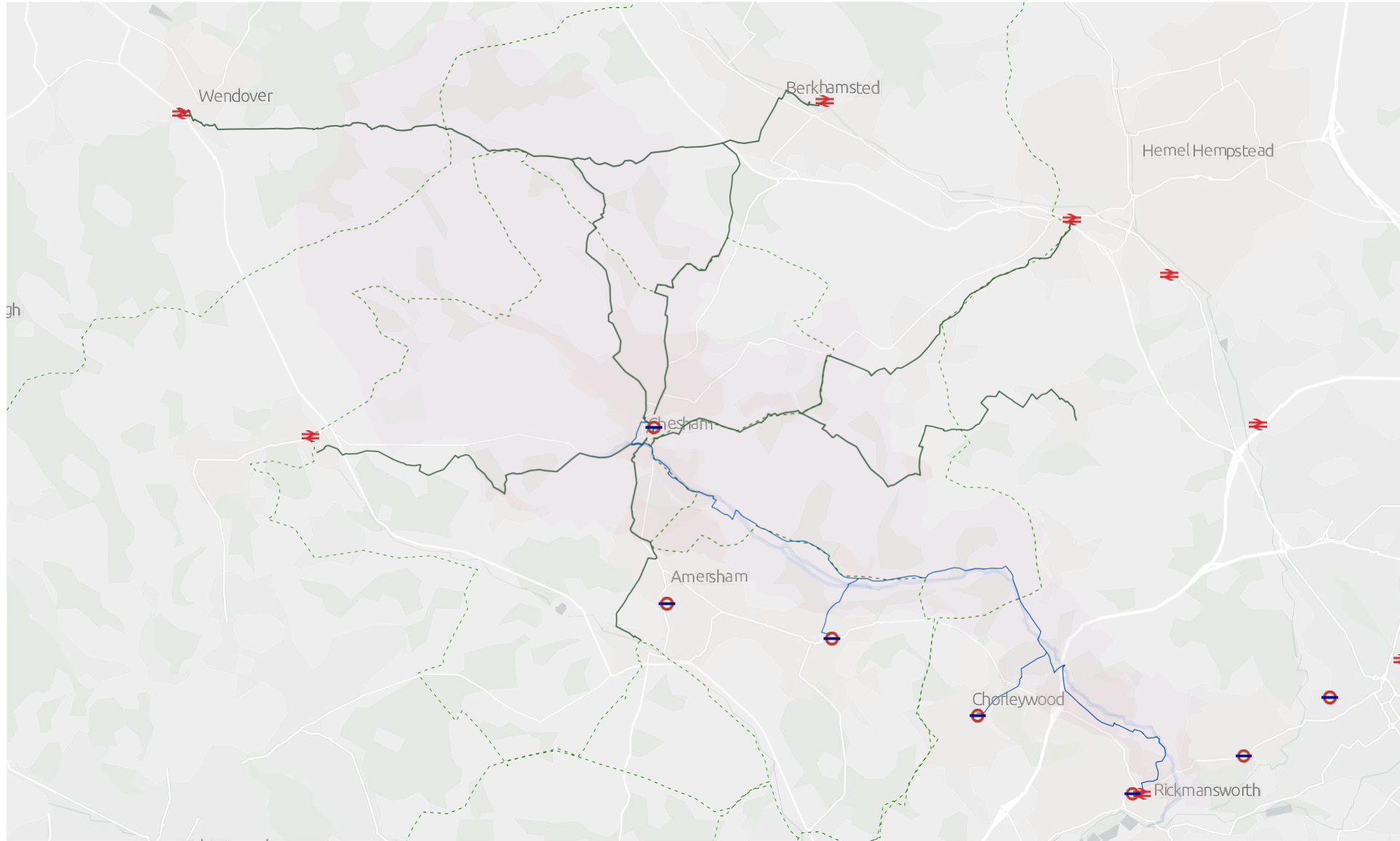


July 2023

- Held in Chesham hosted by the Sustrans and the Chilterns Conservation Board with a range of stakeholders across the catchment.
- Sustrans facilitated a series of table-based activities
- Feedback and ideas were gathered with the aim of ensuring that new routes would complement and enhance existing marked trails and less formal routes
- Activity 1 – What makes a good route
- Activity 2 – Your experiences in the catchment
- Activity 3 – Feedback on the draft network



# Proposed routes in the catchment



# Route testing

Following stakeholder feedback and with agreement from our partners at Chilterns Conservation Board, we selected three routes from the draft network to be the subject of detailed evaluative site visits. These were the Cholesbury Trail, Bovingdon Link, and Chesham to Amersham Link\*.

Each route was walked in its entirety during September 2023 with Sustrans officers recording data using the ESRI Field Maps app on handheld mobile devices. The output data, alongside on-site experience, helped to inform the development of the route alignment.

## Five GIS datasets have been devised and populated for this project:

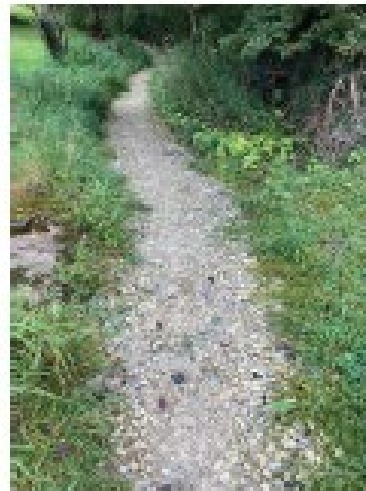
<b>Barriers</b>	Access control barriers including gates, stiles and steps.
<b>Wayfinding</b>	Existing signage, both public rights of way and named trails.
<b>Paths</b>	Observances of path construction and basic dimensions.
<b>Severance</b>	Locations where the route is broken, particularly by the presence of motor traffic.
<b>Nodes</b>	Places where there are facilities or where facilities such as somewhere to rest or shelter could be introduced.



Barriers



Wayfinding



Paths

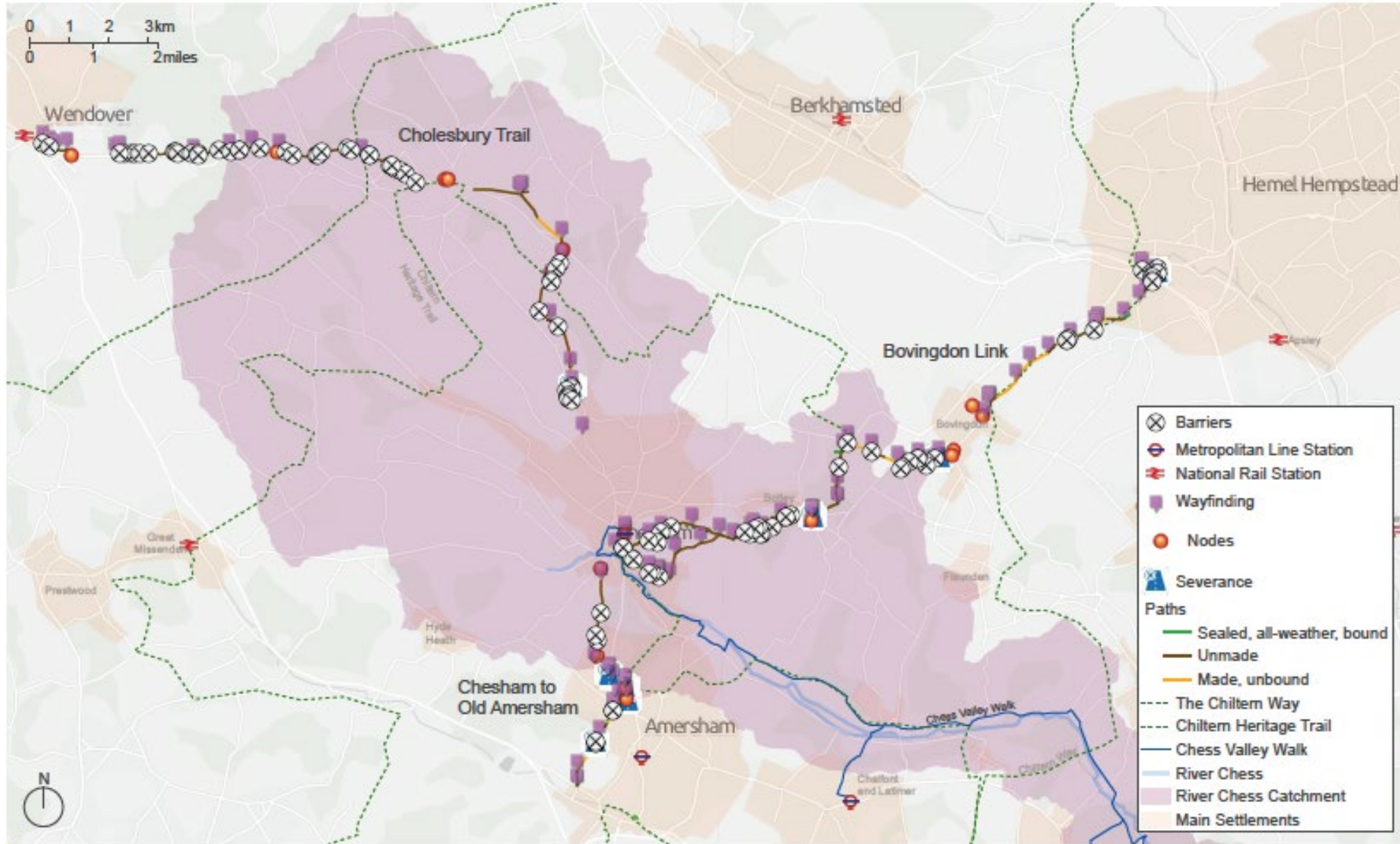


Severance



Nodes

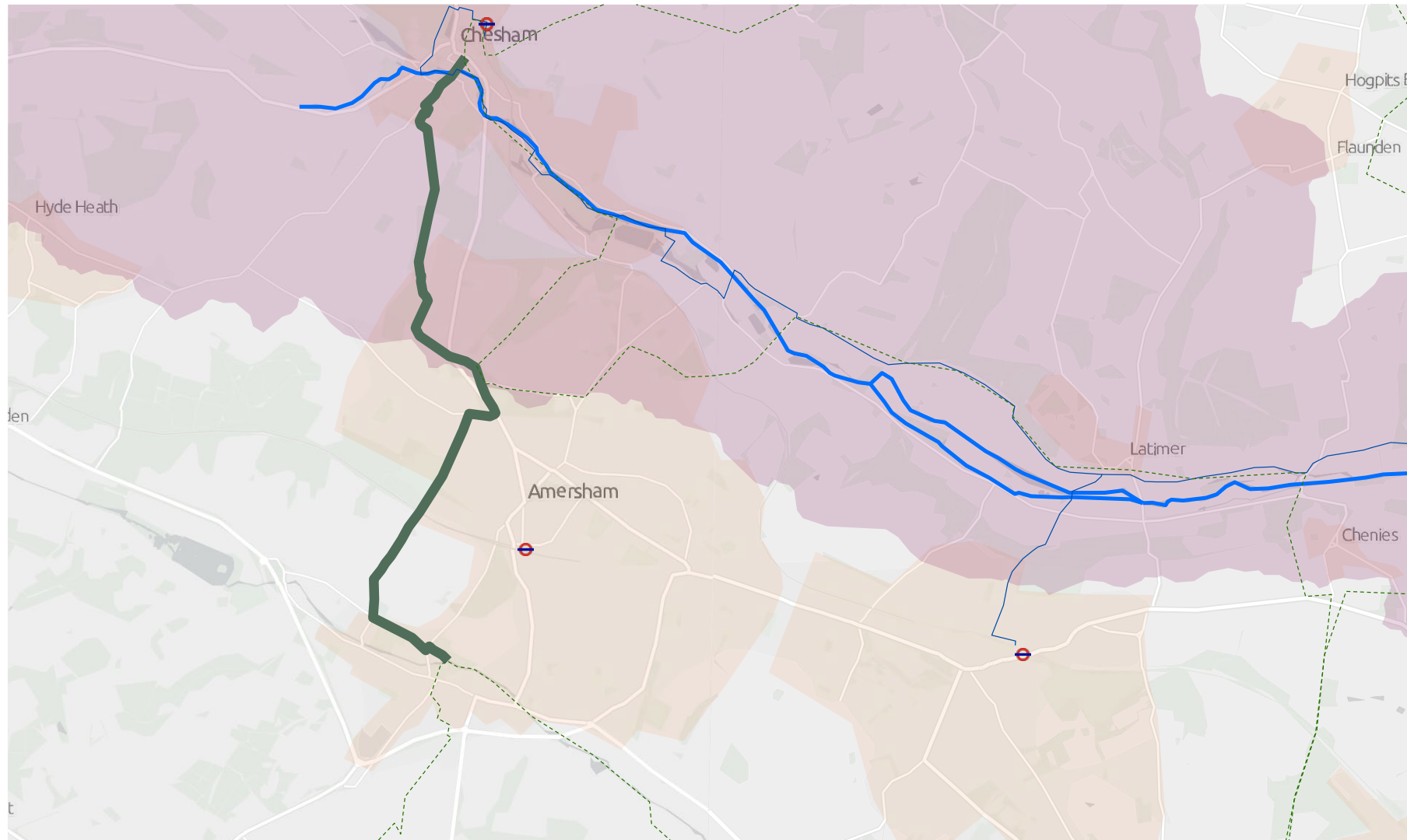
# Tested routes – 5 datasets on Access compiled



# Proposed walking route for development



From April 2024

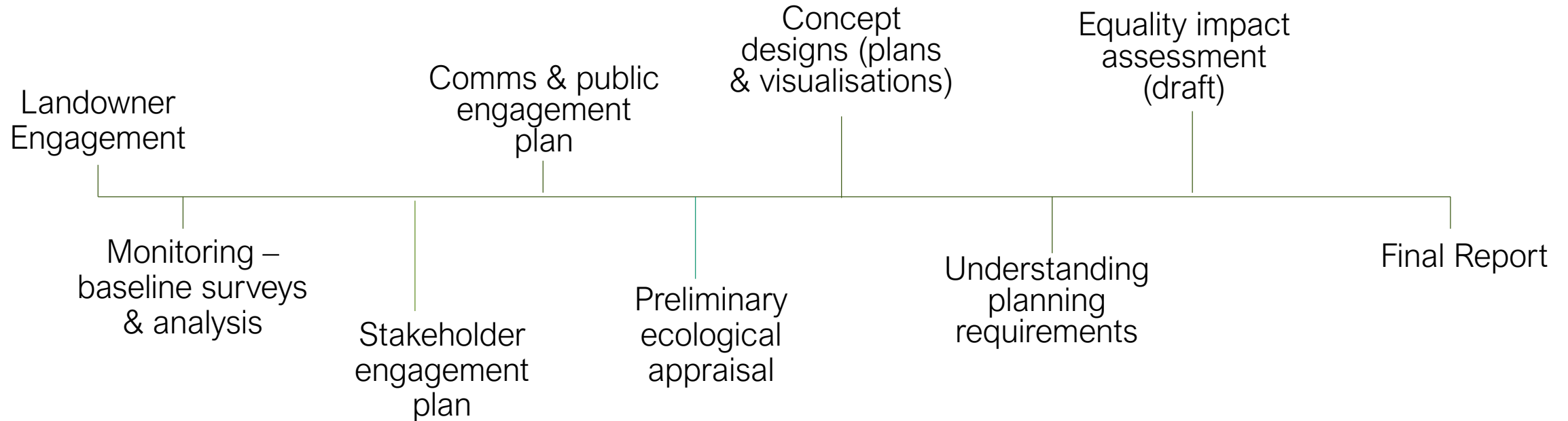




# Suggested Next Steps –



For delivery from April 2024

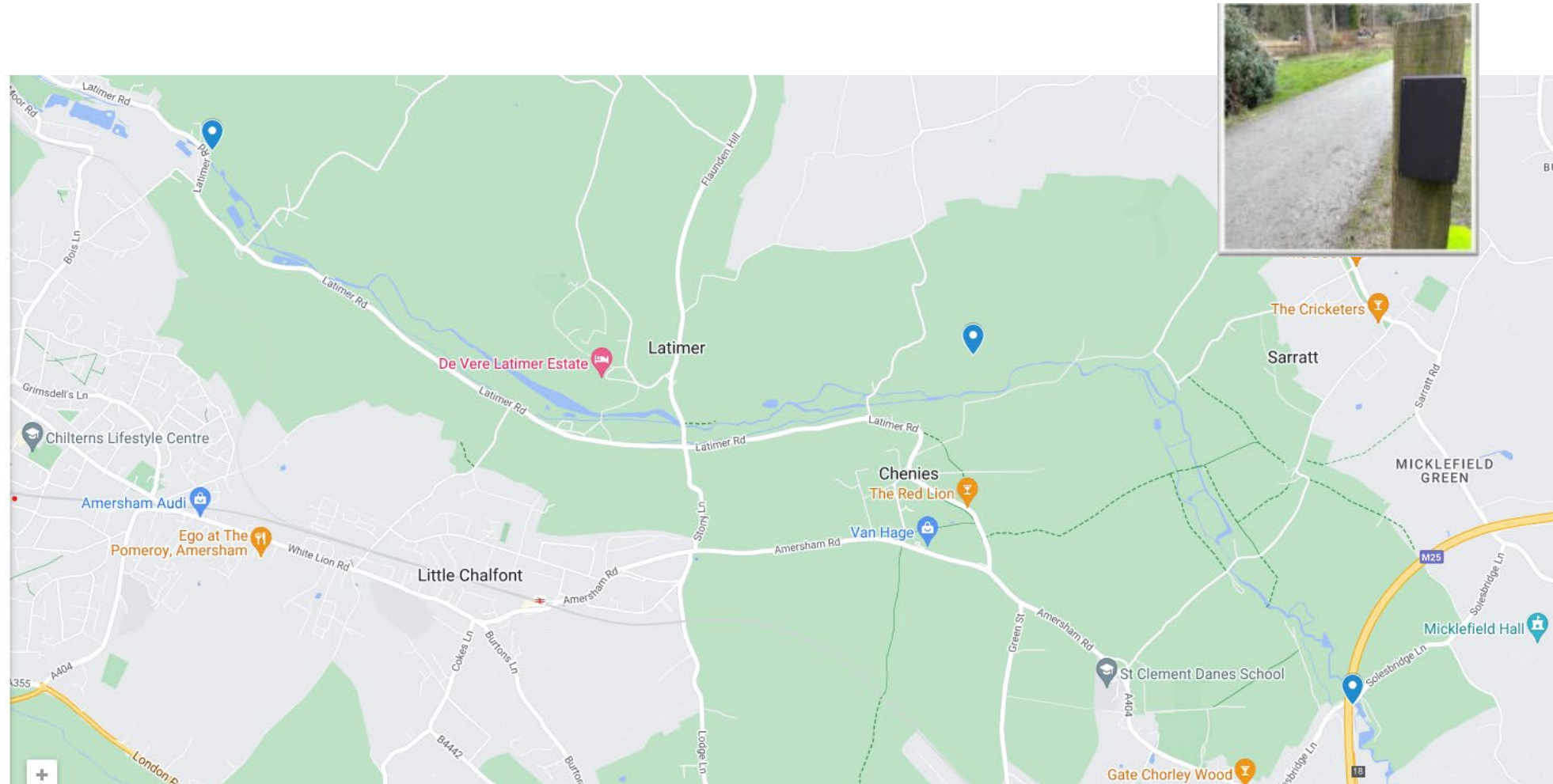


# Footfall Counters

Counting people – at entrance points or along any route where people pass

Three Locations  
Currently under review  
by the supplier.

1. CVW – on the Latimer Road, just beyond the Sewage Treatment Works
2. Frogmore Meadows SSSI – HMWT
3. M25 Solesbridge Lane



# Chiltern Society –



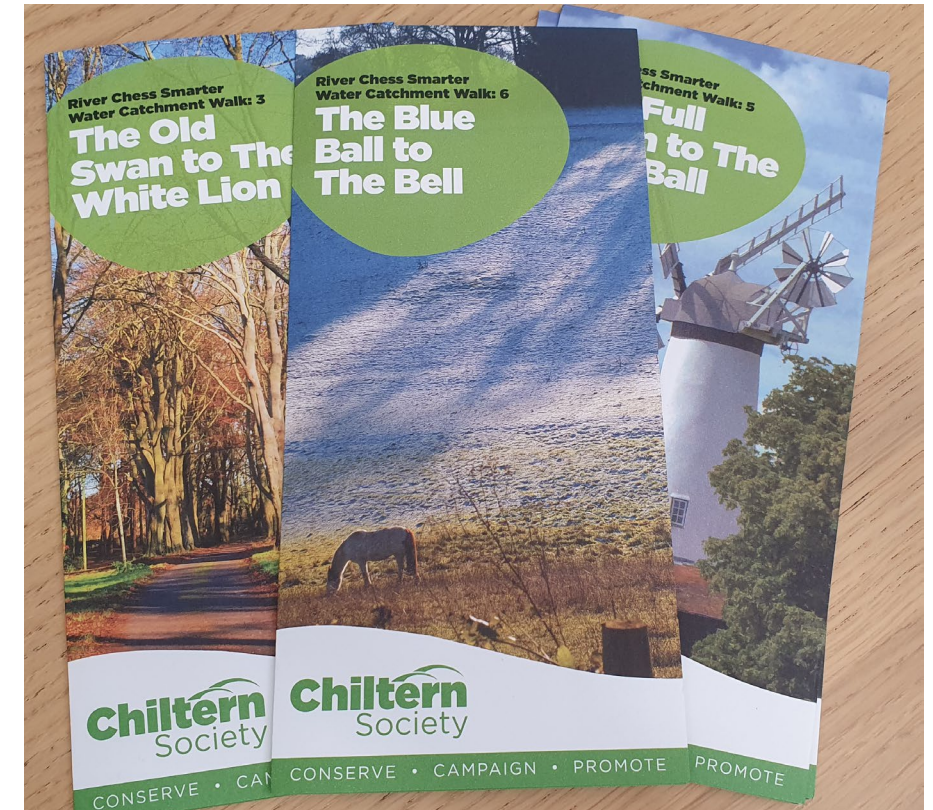
## Brief update

### Jim Conboy – Pub Walks

- 6 Pub to pub walks complete and leaflets created – all in the top of the catchment around the Cholesbury area
- Next Steps – New walks under development

### Andrew Clark – Walks

- Working with the Chilterns Conservation Board to develop a route aimed at Children and accessing Chalk Streams for education
- Looking at other walking routes that will bring people in and out of the catchment for Chiltern Society Magazine
- Looking at Access barriers for wheel chair users as a focus around Chesham Town along the Chess Valley Walk
- PLUS all his regular volunteering





# Thank you

[stephorn@chilternsaonb.org](mailto:stephorn@chilternsaonb.org)

[www.chesssmarterwatercatchment.org](http://www.chesssmarterwatercatchment.org)



Examples in this presentation arise from the River Chess Smarter Water Catchment project, with thanks to the following organisations:

Working in partnership



CHILTERN  
CHALK STREAMS  
PROJECT



Chiltern  
Society  
We care for the Chilterns



Environment  
Agency

AffinityWater



Herts &  
Middlesex  
Wildlife Trust



Queen Mary  
University of London

sustrans 

